

## TRANSFER OF MUSEUM COLLECTION FROM THE HAYASHIBARA MUSEUM OF NATURAL SCIENCES TO THE FUKUI PREFECTURAL DINOSAUR MUSEUM

A total of 34 specimens was transferred from the Hayashibara Museum of Natural Sciences (HMNS) to the Fukui Prefectural Dinosaur Museum (FPDM) following the closure of HMNS in 2015. The specimens with newly assigned specimen numbers as collections of FPDM are reported in Tables 1 and 2. It is noted that the holotype of *Hesperosaurus mjosi* Carpenter, Miles and Cloward 2001 (FPDM-V9674) is included in the specimens.

### ACKNOWLEDGMENTS

We are sincerely grateful to Dr. Sinobu Ishigaki (Okayama University of Science), Dr. Shigeru Suzuki (Hayashibara Co., LTD), Dr. Hideo Nakaya (Kagoshima University) and Dr. Takano Tsuchihata (The University of Tokyo) for providing information about the specimens, publications, and the bachelor's theses. We would like to thank Dr. Takenori Sasaki (The University of Tokyo) for helpful comments.

### REFERENCES

- Akahoshi, M. 2009MS. Biometrical research on fish fossil from the Early Eocene Green River Formation. Bachelor's thesis of Faculty of Science, Kagoshima University, Kagoshima, 51 pp.
- Carpenter, K., C. A. Miles and K. Cloward. 2001. New primitive stegosaur from the Morrison Formation, Wyoming; pp. 55–75 in K. Carpenter (ed.), *The Armored Dinosaurs*. Indiana University Press, Bloomington.
- Hayashi, S., K. Carpenter, M. Watabe and L. A. McWhinney. 2011. Ontogenetic histology of *Stegosaurus* plates and spikes. *Palaeontology* 55: 145–161.
- Ishitsuka, M., and T. Tsuchihata. 2015. Reassessment on the reconstruction of the hind limb muscular system in *Dimetrodon* (Synapsida: Sphenacodontidae). Abstracts with Programs of the 2015 Annual Meeting of the Palaeontological Society of Japan: 41.
- Knaus, P. L., C. D. Shelton and P. M. Sander. 2015. Unraveling cryptic species of *Dimetrodon* from the Clear Fork Group (Lower Permian) –phylogenetic implications of ontogenetic histological features. Abstracts of 3rd International Symposium on Paleohistology: 102.
- Nakaya, H., M. Watabe and K. Fujisawa. 2000a. Taxonomic and functional morphological characters of nearly complete skeleton of genus *Allosaurus* (Theropoda, Saurischia, Dinosauria) discovered from Utah, U.S.A. Abstracts with Programs of the 149th Regular Meeting of the Palaeontological Society of Japan: 38.
- Nakaya, H., M. Watabe and R. Nakahara. 2000b. Taxonomic and functional morphological characters of nearly complete skeleton of *Nodosaurinae* (Ankylosauria, Ornithischia, Dinosauria) discovered from Wyoming, U.S.A. Abstracts with Programs of the 149th Regular Meeting of the Palaeontological Society of Japan: 49.
- Ryu, S. 2009MS. Taphonomy on fish fossil from the Early Eocene Green River Formation. Bachelor's thesis of Faculty of Science, Kagoshima University, Kagoshima, 39 pp.
- Watabe, M., H. Nakaya and R. Nakahara. 2000. Morphological and pathological characters on dermal armors of genus *Edmontonia* (Nodosaurinae, Ankylosauria, Ornithischia). Abstracts with Programs of the 149th Regular Meeting of the Palaeontological Society of Japan: 48.

Teppei SONODA and Yoshikazu NODA  
(Fukui Prefectural Dinosaur Museum)

TABLE 1. List of the specimens belonging to the kingdom Plantae.

Specimen	FPDM No.	HMNS No.	Locality	Age	Remarks
"Plate of Paleozoic plants"	P1402	120	U.S.A.	Carboniferous	Fig. 1
<i>Alethopteris</i> sp.					
<i>Lepidostrobus</i> sp.					
<i>Neuropteris</i> sp.					
<i>Pecopteris</i> sp.					
<i>Araucarioxylon arizonicum</i>	P1403	112	U.S.A.	Late Triassic	Fig. 2

TABLE 2. List of the specimens belonging to the kingdom Animalia.

Specimen	FPDM No.	HMNS No.	Locality	Age	Remarks
<b>VERTEBRATA</b>					
<b>Osteichthyes (bony fishes)</b>					
Latimeriidae gen. et sp. indet.	V9692	165	Germany	Late Jurassic	Fig. 3
<i>Xiphactinus</i> sp.	V9693	113	U.S.A.	Late Cretaceous	
<i>Xiphactinus</i> sp. (cast)	V9694	114	—	—	Fig. 4
"Plate of Freshwater fishes"	V9695	7	U.S.A.	Paleogene	Fig. 5; Akahoshi, 2009MS; Ryu, 2009MS
<i>Diplomystus dentatus</i>					
<i>Knightia eocaena</i>					
<i>Mioplosus labracoides</i>					
<b>Squamata</b>					
<i>Tylosaurus proriger</i> (cast)	V9696	184	U.S.A.	Late Cretaceous	Fig. 6
<b>Ichthyosauria</b>					
<i>Stenopterygius</i> sp.	V9697	9	Germany	Early Jurassic	Fig. 7
<b>Sauropterygia</b>					
Elasmosauridae gen. et sp. indet.	V9698	118	U.S.A.	Cretaceous	Fig. 8
<b>Crocodyliformes</b>					
<i>Steneosaurus bollensis</i>	V9699	174	Germany	Late Jurassic	Fig. 9
<b>Pterosauria</b>					
<i>Pterodactylus antiquus</i>	V9700	150	Germany	Late Jurassic	Fig. 10
<b>Dinosauria</b>					
<i>Allosaurus fragilis</i>	V9672	6	U.S.A.	Middle Jurassic	Fig. 11; Nakaya et al., 2000a.
<i>Allosaurus fragilis</i> (cast)	V9701	116	—	—	Fig. 12
<i>Allosaurus fragilis</i> (model)	O203	46	—	—	Fig. 13
<i>Baryonyx walkeri</i> (cast)	V9702	182	U.K.	Early Cretaceous	Fig. 14
<i>Brachiosaurus altithorax</i> (cast)	V9703	115	—	—	Fig. 15
<i>Deinonychus antirrhopus</i> (model)	O204-1	145	—	—	Fig. 16
<i>Deinonychus antirrhopus</i> (model)	O204-2	144	—	—	Fig. 17
<i>Deinonychus antirrhopus</i> (model)	O204-3	134	—	—	Fig. 18
<i>Edmontonia</i> sp.	V9673	11	U.S.A.	Late Cretaceous	Fig. 19; Nakaya et al., 2000b; Watabe et al., 2000
<i>Edmontonia</i> sp. (cast)	V9704	12	—	—	a cast of FPDM-V9673
<i>Hesperosaurus mjosi</i>	V9674	14	U.S.A.	Late Jurassic	Fig. 20; Carpenter, 2001; Hayashi et al., 2011
<i>Hesperosaurus mjosi</i> (cast)	V9705	15	—	—	a cast of FPDM-V9674
<i>Hesperosaurus mjosi</i> (cast)	V9706	5	—	—	Fig. 21; a cast of the mode of occurrence of FPDM-V9674
<i>Supersaurus</i> sp. (cast)	V9707	164	—	—	Fig. 22; a sucapulocoracoid
<i>Triceratops</i> sp.	V9677	2	U.S.A.	Late Cretaceous	Fig. 23; a skull
<b>Aves</b>					
Dinornithidae gen. et sp. indet.	V9708	146	New Zealand	Pleistocene	Fig. 24
<b>Synapsida</b>					
<i>Dimetrodon limbatus</i>	V9671	3	U.S.A.	Permian	Fig. 25; Ishitsuka and Tsuihiji, 2015; Knaus et al., 2015
<b>Mammalia</b>					
<i>Arsinoitherium zitteli</i> (cast)	V9709	147	Egypt	early Oligocene	Fig. 26
<i>Megacerops platyceras</i>	V9710	1	U.S.A.	early Oligocene	Fig. 27; a skull
<i>Hyaenodon cruentus</i>	V9711	345	U.S.A.	middle Eocene	Fig. 28
<i>Merycoidodon gracilis</i>	V9712	140	U.S.A.	Oligocene	Fig. 29
<i>Smilodectes gracilis</i>	V9713	13	U.S.A.	Oligocene	Fig. 30
<b>ECHINODERMATA</b>					
<b>Crinoidea</b>					
<i>Seirocrinus subangularis</i>	I195	10	Germany	Early Jurassic	Fig. 31



FIGURE 1. "Plate of Paleozoic plants", FPDM-P1402, includes genera *Alethopteris*, *Lepidostrobus*, *Neuropteris* and *Pecopteris*.



FIGURE 2. *Araucarioxylon arizonicum*, FPDM-P1403.



FIGURE 3. Latimeriid coelacanth, FPDM-V9692.



FIGURE 4. Mounted skeleton of *Xiphactinus* sp., FPDM-V9694 (cast)



FIGURE 5. "Plate of Freshwater fishes", FPDM-V9695, includes approximately 400 individuals of genera *Diplomystus*, *Knightia* and *Mioplosus*.



FIGURE 6. Skull of *Tylosaurus proriger*, FPDM-V9696 (cast).



FIGURE 7. *Stenepterygius* sp., FPDM-V9697.

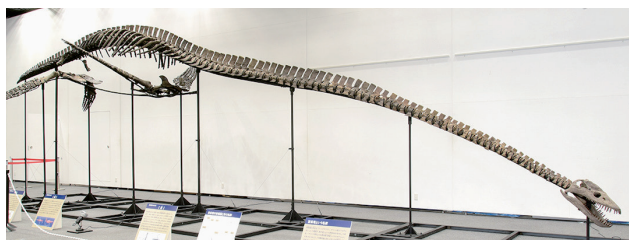


FIGURE 8. Mounted skeleton of Elasmosaurid plesiosaur, FPDM-V9698.





FIGURE 9. *Steneosaurus bollensis*, FPDM-V9699.



FIGURE 10. *Pterodactylus antiquus*, FPDM-V9700.



FIGURE 11. Skull of *Allosaurus fragilis*, FPDM-V9672.



FIGURE 12. Mounted skeleton of *Allosaurus fragilis*, FPDM-V9701 (cast).



FIGURE 13. Life restoration of *Allosaurus fragilis* by Stephen A. Czerkas, FPDM-O203.



FIGURE 14. Skull of *Baryonyx walkeri*, FPDM-V9702 (cast).

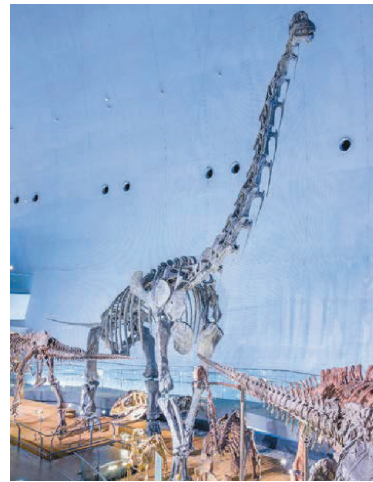


FIGURE 15. Mounted skeleton of *Brachiosaurus altithorax*, FPDM-V9703 (cast).



FIGURE 16. Life restoration of *Deinonychus antirrhopus* by Stephen A. Czerkas, FPDM-O204-1.





FIGURE 17. Life restoration of *Deinonychus antirrhopus* by Stephen A. Czerkas, FPDM-O204-2.



FIGURE 18. Life restoration of *Deinonychus antirrhopus* by Stephen A. Czerkas, FPDM-O204-3.



FIGURE 19. Mounted skeleton of *Edmontonia* sp., FPDM-V9673.



FIGURE 20. Mounted skeleton of *Hesperosaurus mjosi*, FPDM-V9674.



FIGURE 21. Mode of occurrence of *Hesperosaurus* (cast of FPDM-V9674).



FIGURE 22. Supaculocoracoid of *Supersaurus* sp., FPDM-V9707 (cast).



FIGURE 23. Skull of *Triceratops* sp., FPDM-V9677.



FIGURE 24. Mounted skeleton of Dinornithid bird, FPDM-V9708.





FIGURE 25. Skull of *Dimetrodon limbatus*, FPDM-V9671.



FIGURE 26. Skull of *Arsinoitherium zitteli*, FPDM-V9709 (cast).



FIGURE 27. Skull of *Megacerops platyceras*, FPDM-V9710.



FIGURE 28. *Hyainodon cruentus*, FPDM-V9711.



FIGURE 29. *Merycoidodon gracilis*, FPDM-V9712.



FIGURE 30. *Smilodectes gracilis*, FPDM-V9713.



FIGURE 31. *Seirocrinus subangularis*, FPDM-I195.